

Sliding Table Saw RTJ-45C



Feature:

1. Apply to processing all kinds of density boards, shaving boards, wood-based panels, ABS panels, PVC panels, solid wood and others with wood structure and similar hardness.

Detail

1. Saw motor structure for electrical lift and tilt 45°



2. The rip fence almost hovers over the table. The single handed quick clamping and fine adjustment systems ensure quick and accurate setting of the rip fence.



3. Small cover for saw blades



4. Electrical tilt handle and control panel(Digital angle readout is optional)



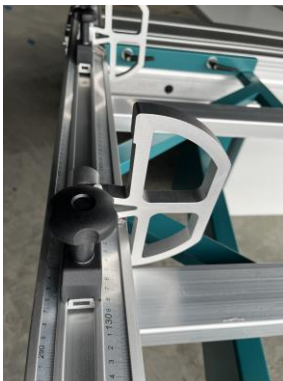
5. Angle ruler for sliding table



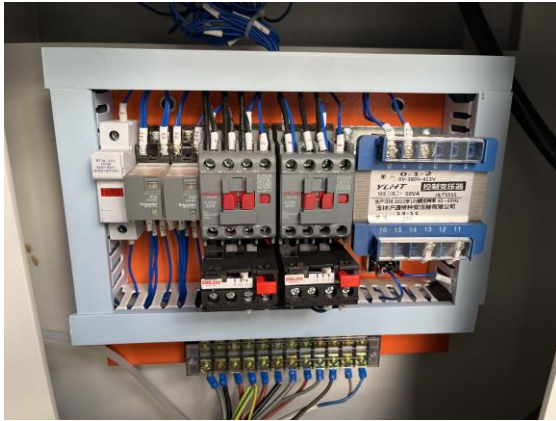
6. The solid outrigger makes it possible to process large and heavy workpieces



7. The crosscut fence can be attached to the sliding table without the use of tools. The end stop provides you with the exact 90° position.



8. Electrical box



Optional:

1. Big cover for saw blades



2. Press devices controlled by cylinders



3. Digital angle readout



4. Manual press device



Parameter

Model	RTJ-45C
Sliding table size	3200x390mm
Max cutting thickness	80mm
Main saw blade diameter	300mm
Inner hole diameter of main saw blade	30mm
Scoring saw blade diameter	120mm
Inner hole diameter of scoring saw blade	20mm
Speed of main saw spindle	4000/5000r/min
Speed of scoring saw spindle	9000r/min
Angle of inclination	45°
Main saw motor power	5.5kw
Scoring saw motor power	0.75kw
Angle tilt motor	90w
Power	AC380V/50Hz