

## CNC 6 Sides Drilling Machine+ATC



### ➤ Details:

#### 1. 9 KW HQD Spindle



2. 16 ATC(4 tool holders are offered for free)



3. Upper drilling unit.



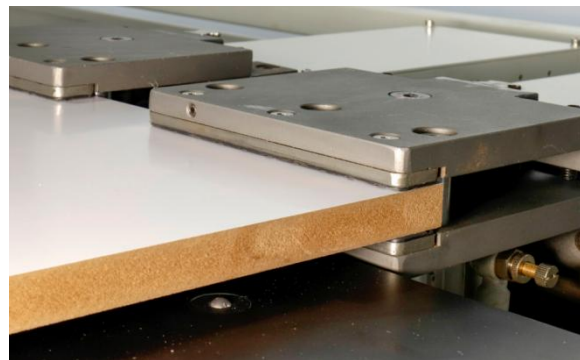
4. Bottom drilling unit and 3.5kw spindle with dust blower device to keep clean.



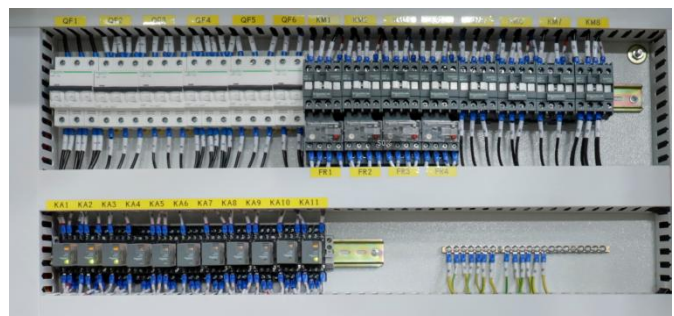
## 5. Industrial monitor



## 6. Gripper which has auto-cleaning function. Manually load and align.



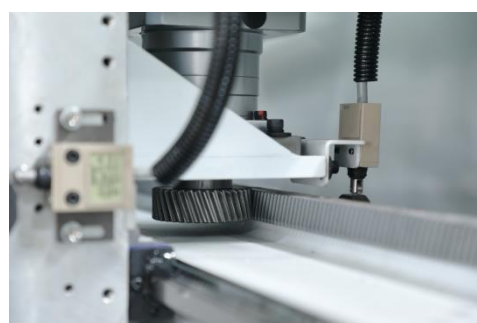
## 7. Low-voltage apparatus & relay: Schneider/France Sensor: Autonics/Korea Pneumatic elements: EMC or AIRTAC



## 8. Syntec Servo motor



## 9. Independent research Planetary reducer





### 10. Folinn VFD



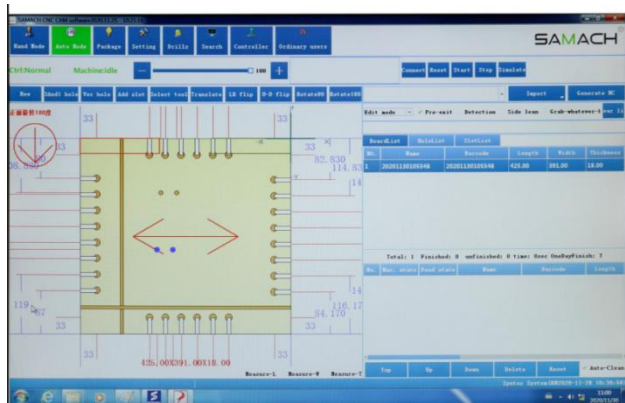
### 11. Rouist / Germany: Linear guideway in X/Y axis, ball screw in Z axis, precision ground gear rack



### 12. 2.2KW Air blower



### 13. NCStudio and independent research COM Control system.



#### 14. Automatic oiling for gearing



#### 15. Airtable output device.



#### 16. Touch-off device



### ➤ Optional

#### 1. Rear belt conveyor output



\*Pictures for reference only, specific products in kind prevail.

### ➤ Parameter

Model	RMZ-126A-16	Bottom vertical drill	10 pcs
Efficiency	100-120pcs per hour	Size of machine Length*width*height	5500×3500×2150mm
Length of board	200-2800mm	Protection of borehole depth	Yes. Protection Software
Width of board	50-1200mm	Gripper grab and position	One time
Thickness of board	12-40mm	Trough hole action	Split action
X/Y/Z MAX.Speed	120/80/30m/min	Drilling acting	Principle of proximity
Power of main shaft	9KW+3.5KW	Double sides groove	First top and then bottom
Speed of main shaft	18000rpm	Action of drilling hole position	Principle of proximity
Upper vertical drill	12pcs	Clear alarm	No alarm after trouble shooting automatically; some alarms requires reset
Upper horizontal drill	X: 2*2+ Y: 2*2		

### ➤ Brand of part

Item	Part	Brand	Brand
1	Spindle	HQD	
2	Boring block	KMS	
3	Servo motor	Syntec	
4	VFD	Folinn	
5	Contactor/Time relay	Germany Schneider	

\*1. The brands of the above accessories, the country and region only indicate where the brand belongs, not the manufacture origin.;

\*2. The manufacturer reserves the right to replace the similar quality brand.