



## AUTOMATIC FEEDERS

# STEFF 2038

### Professional power-feeding unit with fixed speeds

**Safety device** for a safe and effective workpiece feeding on different types of traditional **wood-working machines**.

- Improves the safety: the operator does not have to put his hands close to the tool
- Improves the finish quality, thanks to the constant and even feed-rate
- Feed-rate can be easily selected to meet every specific working need
- Easily adjustable to suit different sizes of work piece

More than 400.000 machines manufactured, over sixty years' experience. Maggi is the only European manufacturer of power-feeding units, which are 100% Italian-made, and abiding by the highest quality standards, as a result of the "Lean" manufacturing process, also known as "Toyota System".

## TECHNICAL FEATURES MODEL

Main features: N.8 fixed speeds (2-4-5,5-6,5-11-13-16,5-33 mt/min)

N.3 wheels (diam./ thickness 120x60 mm)

Motor power: 1 HP / 0,75 kW - 1.400/2.800 RPM

Cast aluminium housing, finished on high-precision machining centers

Steel-made gear cover

Eco-friendly, rust-resistant powder coating

Manufactured according to EC standards

## STANDARD EQUIPMENT

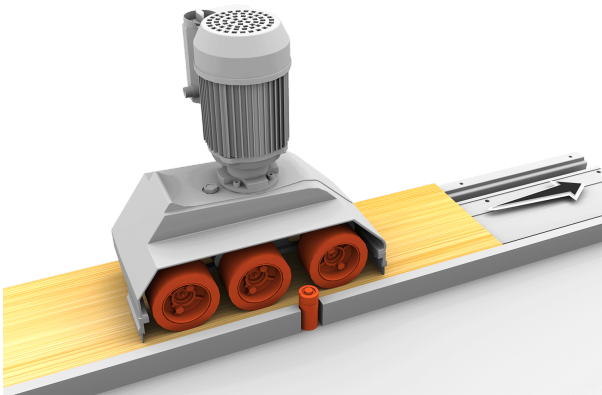
Cast aluminium housing and steel-made gear cover

1 HP motor with 3mt cable

50-Shore "Feeder Grip" rubber wheels

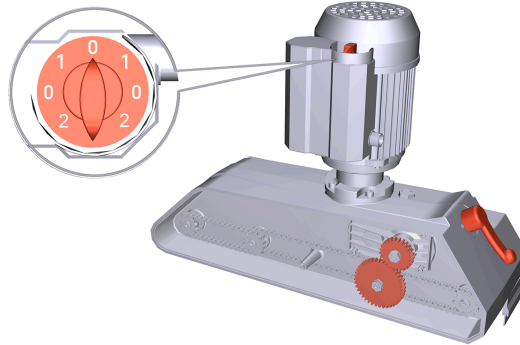
Package: recyclable cardboard box

# MORE INFORMATION



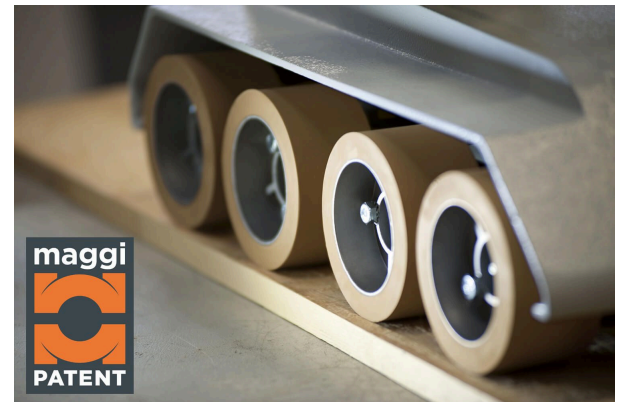
## HIGH-QUALITY END PRODUCTS

3-wheel model: the ideal solution for the feeding of laths and medium or small-size workpieces. Thanks to the two infeed-wheels and the third outfeed one, the workpiece is constantly and evenly fed through the working process, thus remarkably improving the quality of the end products.



## QUICK SET-UP WITH GEAR SHIFT

The speed selector allows a quick set-up of the 1st and the 2nd feeding rate and the quick change of the feeding direction back and forth. First 4 speeds are obtained by swapping the internal gears, while turning the gear lever. You can get the additional 4 speeds easily and fast.



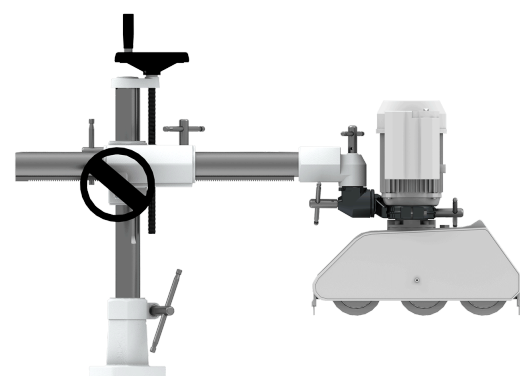
## PERFECT GRIP

50-Shore wheels made of patented "Feeder Grip" rubber, providing the longest durability and the highest grip on the workingpiece.



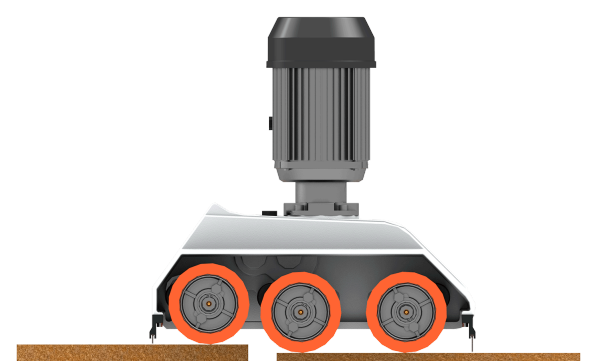
## SAFETY AS A CORE VALUE

A power-feeder improves the safety as it feeds the workpiece close to the tool, while operator's hands are kept at a distance. Its effectiveness depends on specific design and manufacturing criteria. Maggi feeders are the only ones designed and manufactured in Italy and abiding by all EU safety norms.



## UNIVERSAL STAND

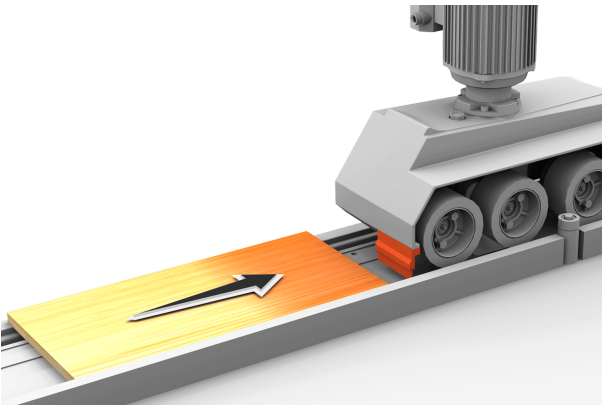
For easy positioning and adjusting of the feeding unit on the machine tool. It is easy to fix, stable and strong: foot, cross-shaped piece, pipe, joint and collar are made of cast-iron and the two columns are made of rectified steel of considerable thickness. Handles made of steel and adjusting wheels allow a quick and accurate positioning.



## HIGH ADAPTABILITY

The 20 mm wheel suspension, with calibrated springs, allows the constant and even feeding of workpieces with different thicknesses without any additional set-up.

# MORE INFORMATION



### SAFETY BRUSHES

Additional safety devices, both sides of the feeding unit.

---



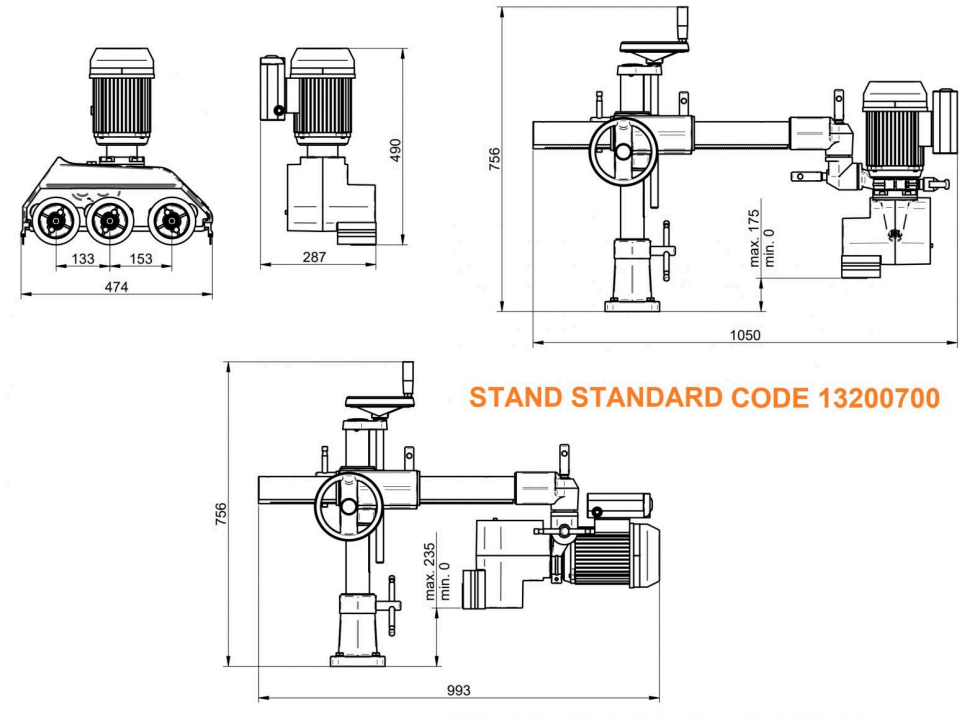
### SAFE STAND

Equipped with safety restraint devices (SPS - System) preventing accidental unkooks, to abide by EC safety norms.

---

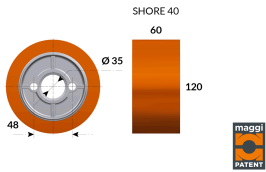
# DATA SHEET

N. of speeds back and forth	8
Fixed speeds	2-4-5.5-6.5-11-13-16.5-33 mt/min
N. of wheels	3
Wheel diameter and thickness	120 x 60 mm
Motor	1 HP / 0,75 KW    RPM 1400 /2800
Wheel suspension	20 mm
Distance between wheels	133 mm - 153 mm
Distance between first and last wheel	286 mm
Overall dimensions and net weight of the feeding unit	474 x 220 x 490 mm - 31 Kg
Overall dimensions and net weight of the stand	540 x 910 mm - 35 Kg
Package dimensions and gross weight (feeding unit)	670 x 570 x 330 mm - 32 Kg
Package dimensions and gross weight (stand)	800 x 330 x 330 mm - 37 Kg



# ACCESSORIES

Perfect grip on panels - Smooth surface



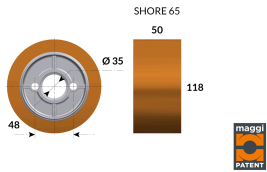
## Patented Feeder Grip 363

The special rubber covering, patented and guaranteed by Maggi: 60-year leading manufacturer, ensures the highest grip on the workingpiece.

Patented "Feeder Grip 363 " rubber wheel 120x 60 mm diam. / 40 shore best suited for extremely smooth surfaces ( veneer / laminated wood)

**CODICE: 30102015**

Perfect grip on panels - Rough surface



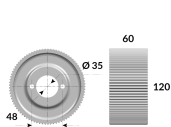
## Rubber wheel

The special rubber covering, patented and guaranteed by Maggi: 60-year leading manufacturer, ensures the highest grip on the workingpiece

Rubber wheel 118x 50 mm diam. / 65 shore, best suited for rough surfaces ( unfinished wood)

**CODICE: 30100014**

Perfect grip on panels - Unfinished surface



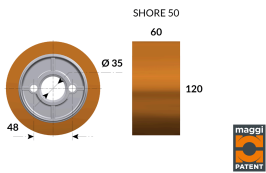
## Wheel made of cast-iron

Guaranteed highest grip, specific for the feeding of panels with an unfinished surface ( raw wood)

Wheel made of cast-iron 120x60 mm

**CODICE: 40102015**

Perfect grip on panels - Smooth surface



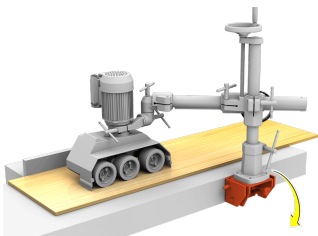
## Patented Feeder Grip 758 - STANDARD TYPE

The special rubber covering, patented and guaranteed by Maggi: 60-year leading manufacturer, ensures the highest grip on the workingpiece

Patented "Feeder Grip 758 " rubber wheel 120x 60 mm diam. / 50 shore, best suited for smooth surfaces ( finished wood)

**CODICE: 30100015**

Save space on the working table

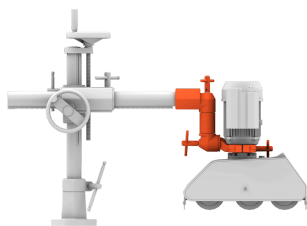


## Tipper clamp 96

It permits to fix the base of the universal stand sideways of the working table and to tilt the power-feeding unit quickly to free space for maintenance and/or other adjusting operations

**CODICE: 22100151**

Increase the versatility



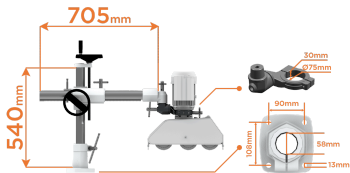
## Pipe-joint-collar group with extension

It allows to position the power-feeding unit at a greater distance from the tool or the working table

**CODICE: 23201012**

# ACCESSORIES

## Standard stand



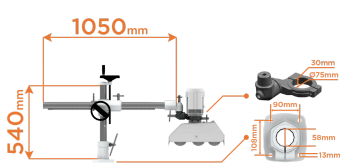
### Standard universal stand with 705 mm horizontal and 540 mm vertical column

Standard universal stand with 705 mm horizontal and 540 mm vertical column

It is the essential complement to the power-feeding unit as it allows its positioning and fine adjustment on the machine tool

**CODICE: 13200700**

## Special stands



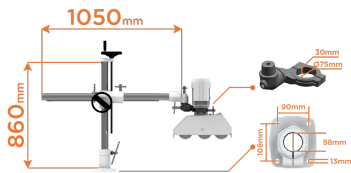
### Universal stand with 1.050 mm horizontal and 540 mm vertical column

Universal stand with 1.050 mm horizontal and 540 mm vertical column

It is the essential complement to the power-feeding unit as it allows its positioning and fine adjustment on the machine tool. This type of stand has a longer horizontal tube for a greater versatility

**CODICE: 13300700**

## Special stands



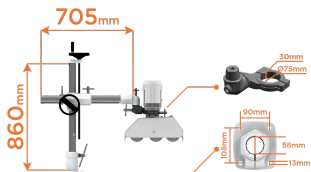
### "V" universal stand with 1.050 mm horizontal and 860 mm vertical column

"V" universal stand with 1.050 mm horizontal and 860 mm vertical column

It is the essential complement to the power-feeding unit as it allows its positioning and fine adjustment on the machine tool. This type of stand has a longer horizontal and vertical tube for an even greater versatility

**CODICE: 13500700**

## Special stands



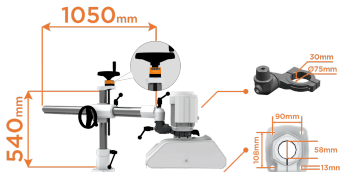
### "V-M" universal stand with 705 mm horizontal and 860 mm vertical column

"V-M" universal stand with 705 mm horizontal and 860 mm vertical column

It is the essential complement to the power-feeding unit as it allows its positioning and fine adjustment on the machine tool. This type of stand has a longer vertical tube for a greater versatility

**CODICE: 13099999**

## Special stands



### PLUS universal stand with 1050 horizontal and 540 mm vertical column

"Plus" universal stand with 1050 horizontal and 540 mm vertical column

QUICK, EASY AND ACCURATE POSITIONING thanks to the ergonomic handles and the numeric counter for the height adjustment

**CODICE: 13400600**

## Special voltages

### Single-phase Motor

To have the machine working in small handcraft shops having an electric system running on 220 VIt's

**CODICE:**

# ACCESSORIES

Special voltages

## "CSA" standards

Electrical standards abiding by the Canadian wiring regulations

**CODICE:**