



AUTOMATIC FEEDERS

VARIOSTEFF 3

Professional power-feeding unit with variable speeds

Safety device for a safe and effective workpiece feeding on different types of traditional **wood-working machines**.

- Improves the safety: the operator does not have to put his hands close to the tool
- Improves the finish quality, thanks to the constant and even feed-rate
- Feed-rate can be easily selected to meet every specific working need
- Easily adjustable to suit different sizes of work piece

More than 400.000 machines manufactured, over sixty years' experience. Maggi is the only European manufacturer of power-feeding units, which are 100% Italian-made, and abiding by the highest quality standards, as a result of the "[Lean](#)" [manufacturing process](#), also known as "Toyota System".

TECHNICAL FEATURES MODEL

Main features:

Variable speeds (3 - 18 mt/min - up to 33 m/min optional)

N.3 wheels (diam./ thickness 120x60 mm)

Motor power: 1 HP / 0,75 kW - 1.400/2.800 RPM

Cast aluminium housing, finished on high-precision machining centers

Steel-made gear cover

Eco-friendly, rust-resistant powder coating

Manufactured according to EC standards

STANDARD EQUIPMENT

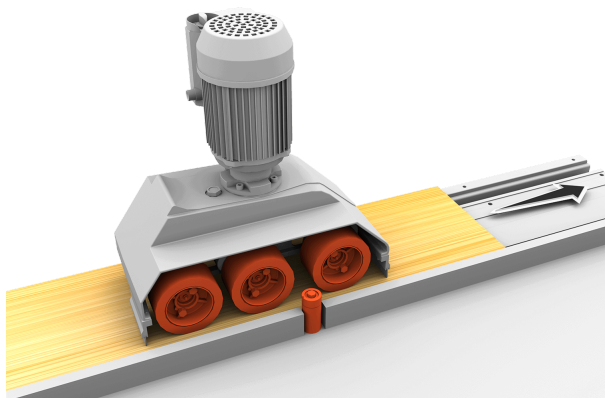
Cast aluminium housing and steel-made gear cover

1 HP motor with 3mt cable

50-Shore "Feeder Grip" rubber wheels

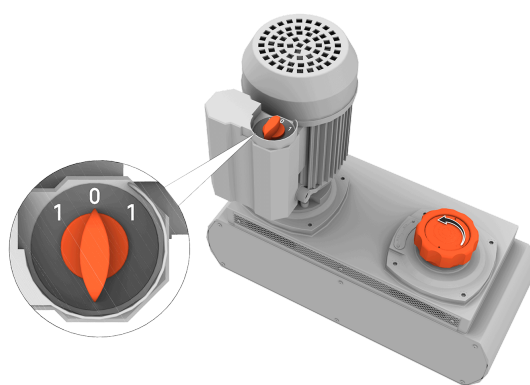
Package : recyclable cardboard box

MORE INFORMATION



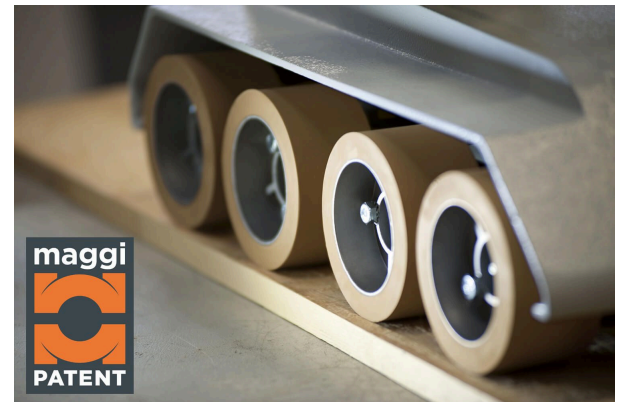
HIGH-QUALITY END PRODUCTS

3-wheel model: the ideal solution for the feeding of laths and medium or small-size workpieces. Thanks to the two infeed-wheels and the third outfeed one, the workpiece is constantly and evenly fed although the working process, thus remarkably improving the quality of the end products.



HIGHEST VERSATILITY

A wide range of variable speeds, that You can easily select by turning a knob. The ideal solution for those who often need to change the feeding rate. The speed selector on the motor unit allows a quick change of the feeding direction back and forth.



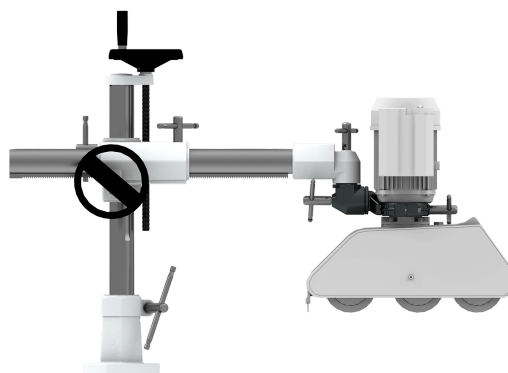
PERFECT GRIP

50-Shore wheels made of patented "Feeder Grip" rubber, providing the longest durability and the highest grip on the workingpiece.



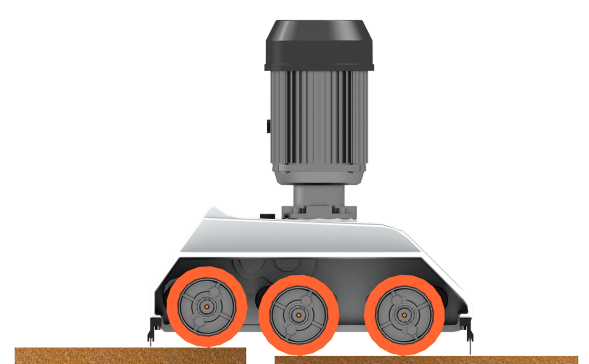
SAFETY AS A CORE VALUE

A power-feeder improves the safety as it feeds the workpiece close to the tool, while operator's hands are kept at a distance. Its effectiveness depends on specific design and manufacturing criteria. Maggi feeders are the only ones designed and manufactured in Italy and abiding by all EU safety norms.



UNIVERSAL STAND

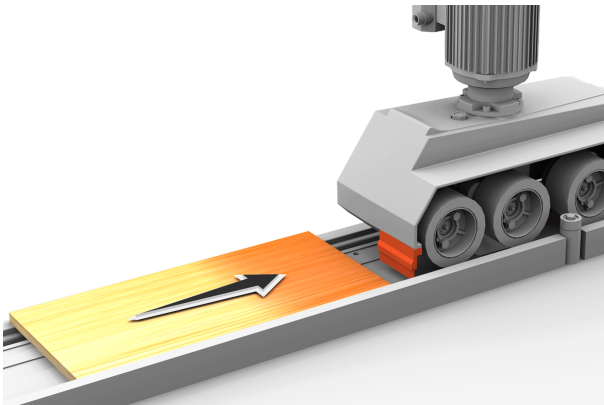
For easy positioning and adjusting of the feeding unit on the machine tool. It is easy to fix, stable and strong: foot, cross-shaped piece, pipe, joint and collar are made of cast-iron and the two columns are made of rectified steel of considerable thickness. Handles made of steel and adjusting wheels allow a quick and accurate positioning.



HIGH ADAPTABILITY

The 20 mm wheel suspension, with calibrated springs, allows the constant and even feeding of workpieces with different thicknesses without any additional set-up.

MORE INFORMATION



SAFETY BRUSHES

Additional safety devices, both sides of the feeding unit.

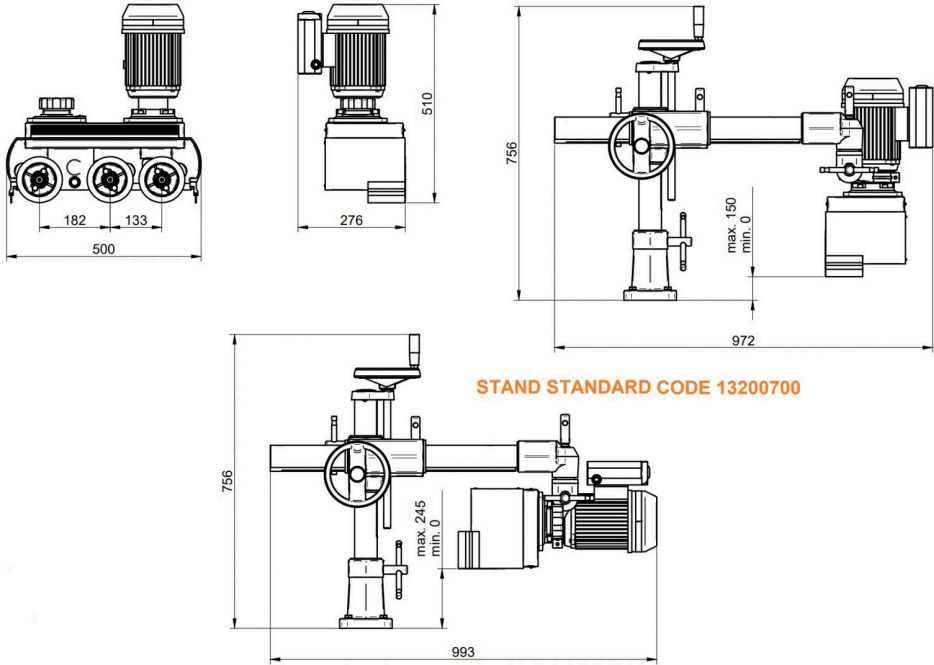


SAFE STAND

Equipped with safety restraint devices (SPS - System) preventing accidental unkooks, to abide by EC safety norms.

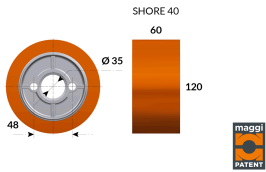
DATA SHEET

N. of speeds back and forth	da 3 a 18 mt/min (fino a 33 mt/min optional)
Fixed speeds	----
N. of wheels	3
Wheel diameter and thickness	120 x 60 mm
Motor	1 HP / 0,75 KW RPM 1400 /2800
Wheel suspension	20 mm
Distance between wheels	182 mm - 133 mm
Distance between first and last wheel	315 mm
Overall dimensions and net weight of the feeding unit	506 x 206 x 510 mm - 31 Kg
Overall dimensions and net weight of the stand	540 x 910 mm - 35 Kg
Package dimensions and gross weight (feeding unit)	670 x 570 x 330 mm - 33 Kg
Package dimensions and gross weight (stand)	800 x 330 x 330 mm - 37 Kg



ACCESSORIES

Perfect grip on panels - Smooth surface



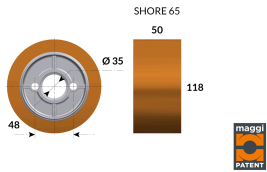
Patented Feeder Grip 363

The special rubber covering, patented and guaranteed by Maggi: 60-year leading manufacturer, ensures the highest grip on the workingpiece.

Patented "Feeder Grip 363 " rubber wheel 120x 60 mm diam. / 40 shore best suited for extremely smooth surfaces (veneer / laminated wood)

CODICE: 30102015

Perfect grip on panels - Rough surface



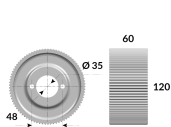
Rubber wheel

The special rubber covering, patented and guaranteed by Maggi: 60-year leading manufacturer, ensures the highest grip on the workingpiece

Rubber wheel 118x 50 mm diam. / 65 shore, best suited for rough surfaces (unfinished wood)

CODICE: 30100014

Perfect grip on panels - Unfinished surface



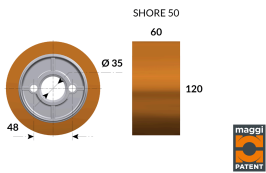
Wheel made of cast-iron

Guaranteed highest grip, specific for the feeding of panels with an unfinished surface (raw wood)

Wheel made of cast-iron 120x60 mm

CODICE: 40102015

Perfect grip on panels - Smooth surface



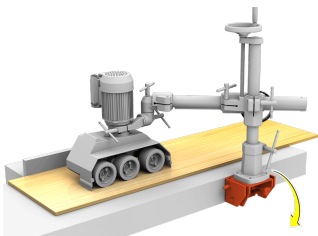
Patented Feeder Grip 758 - STANDARD TYPE

The special rubber covering, patented and guaranteed by Maggi: 60-year leading manufacturer, ensures the highest grip on the workingpiece

Patented "Feeder Grip 758 " rubber wheel 120x 60 mm diam. / 50 shore, best suited for smooth surfaces (finished wood)

CODICE: 30100015

Save space on the working table

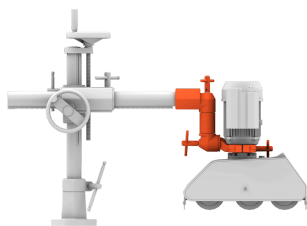


Tipper clamp 96

It permits to fix the base of the universal stand sideways of the working table and to tilt the power-feeding unit quickly to free space for maintenance and/or other adjusting operations

CODICE: 22100151

Increase the versatility



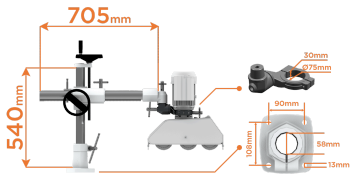
Pipe-joint-collar group with extension

It allows to position the power-feeding unit at a greater distance from the tool or the working table

CODICE: 23201012

ACCESSORIES

Standard stand



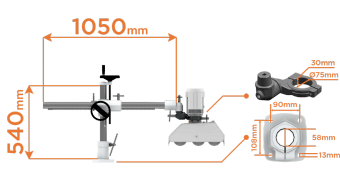
Standard universal stand with 705 mm horizontal and 540 mm vertical column

Standard universal stand with 705 mm horizontal and 540 mm vertical column

It is the essential complement to the power-feeding unit as it allows its positioning and fine adjustment on the machine tool

CODICE: 13200700

Special stands



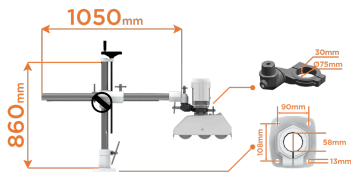
Universal stand with 1.050 mm horizontal and 540 mm vertical column

Universal stand with 1.050 mm horizontal and 540 mm vertical column

It is the essential complement to the power-feeding unit as it allows its positioning and fine adjustment on the machine tool. This type of stand has a longer horizontal tube for a greater versatility

CODICE: 13300700

Special stands



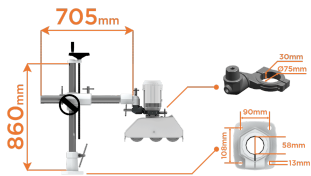
"V" universal stand with 1.050 mm horizontal and 860 mm vertical column

"V" universal stand with 1.050 mm horizontal and 860 mm vertical column

It is the essential complement to the power-feeding unit as it allows its positioning and fine adjustment on the machine tool. This type of stand has a longer horizontal and vertical tube for an even greater versatility

CODICE: 13500700

Special stands



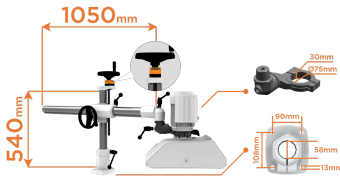
"V-M" universal stand with 705 mm horizontal and 860 mm vertical column

"V-M" universal stand with 705 mm horizontal and 860 mm vertical column

It is the essential complement to the power-feeding unit as it allows its positioning and fine adjustment on the machine tool. This type of stand has a longer vertical tube for a greater versatility

CODICE: 13099999

Special stands



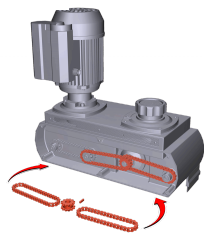
PLUS universal stand with 1050 horizontal and 540 mm vertical column

"Plus" universal stand with 1050 horizontal and 540 mm vertical column

QUICK, EASY AND ACCURATE POSITIONING thanks to the ergonomic handles and the numeric counter for the height adjustment

CODICE: 13400600

Increase the speed



High-speed gear set

"High-speed" gear set (to increase the speed range from 3-18 m/min to 4-33 m/min)

By using this gear set You can widen the range of the available feeding rates to obtain a faster feeding and a higher productivity

CODICE: 40510100

ACCESSORIES

Special voltages

Single-phase Motor

To have the machine working in small handcraft shops having an electric system running on 220 VIts

CODICE:

Special voltages

"CSA" standards

Electrical standards abiding by the Canadian wiring regulations

CODICE: